



Leigh Academy

**High Halstow**



# Primary Prospectus

Dream | Explore | Succeed

# Leigh Academy High Halstow is part of Leigh Academies Trust



Leigh Academies Trust is one of the country's largest and most-established multi-academy trusts operating across Kent, Medway and South East London. It contains primary, secondary and special academies and is highly inclusive and successful. Our mission is to deliver "education for a better world" by ensuring that young people in our academies have an excellent start in life regardless of their background or ability.

## Our Values

### **We care -**

about our pupils through our human scale approach to education, our staff and their well-being and the communities that we serve, driven by our high ideals and strong moral values.

### **We have boundless ambition -**

to achieve excellence for all and create confident young adults with high levels of resilience and integrity.

### **We work together -**

as one team in the belief that we are greater than the sum of our parts. We foster an enterprising culture through collaboration and in close partnership with industry and other educators.

### **We keep getting better -**

using our 'can-do' attitude towards continuous improvement and innovation.



For admission enquiries telephone:  
01634 251098 or email: [info@highhalstow.latrust.org.uk](mailto:info@highhalstow.latrust.org.uk)



# Contents

Use our contents page to navigate your way through our prospectus

## Principal's welcome

A message from Mrs G Stangroom

## Our Vision

About us

## Our curriculum

What we offer

## The International Baccalaureate Primary Years Programme

We follow the IB PYP specifically designed for pupils aged 3-12

## Home learning

Tasks pupils will receive for further learning at home

## Admissions

How to apply for our academy

## Pupils with Special Educational Needs (SEN)

Our response to pupils with Special Educational Needs (SEN)

## Parents and community

Help support our academy by joining the Parent Teacher Association (PTA)

## Including and valuing everyone

How we promote equality and equal opportunities

## Beyond the classroom

Events, trips and visits

## Breakfast club

Join friends for breakfast before school

## School meals

## Safeguarding

Measures put in place to secure the welfare and safety of all our children

## Digital devices

## Further information

Find our Open Events and more

# Welcome



‘My child continues to thrive at Leigh Academy High Halstow, and to watch his enthusiasm for learning is wonderful.

Thank you to all staff at the school for doing such an outstanding job.’

Parent

# Dream Explore Succeed

## Welcome to Leigh Academy High Halstow

I am delighted to welcome you to Leigh Academy High Halstow. All of the staff believe in the huge potential of our pupils and focus relentlessly on high aspirations and high achievement. We recognise for some this could be in academic subjects whilst for others their strengths could lie in other areas such as sports and the arts.

Leigh Academy High Halstow offers a caring and supportive learning environment that nurtures pupils' development into positive, well rounded members of the community. The curriculum is taught through the International Baccalaureate Primary Years Programme, (IB PYP), and incorporates the interests and backgrounds of our pupils. We want all of our pupils to become confident, independent learners who show respect for one another and can talk articulately about their feelings and ideas.

Mrs G Stangroom  
Principal





## our VISION

Leigh Academy High Halstow has at its core the pursuit of the highest standards possible in education.

We believe in high aspirations, high motivation and high achievement for all. Through our extended curriculum we seek to meet the needs of the individual.

We aim to build a community where everyone feels equally valued, safe and challenged to do their best in everything.

We are committed to ensuring the very best for our children in order for them to play a significant part in society.

# Dream Explore Succeed



## Our curriculum

All staff at Leigh Academy High Halstow are committed to providing a highly engaging and relevant curriculum that takes into account the interests and needs of our pupils. Our curriculum is taught through the International Baccalaureate Primary Years Programme (IB PYP). Leigh Academy High Halstow is a candidate school for the IB PYP and is pursuing authorisation as an IB World School.

The intention is to ensure that pupils develop as inquirers and deepen their knowledge of the world around them, including their own local area. This approach provides a high level of ambition to our curriculum and ensures that all pupils, including those with SEND and disadvantaged pupils, are equipped with the knowledge and cultural capital they need to succeed in life.

Our strapline, 'Dream, Explore Succeed,' is at the centre of our planning and guides the academy in its daily activities and longer term planning.

'As parents we are so grateful...our daughter thoroughly enjoys school. The teacher is always happy and bubbly and so positive, it's a pleasure to see and puts us at ease knowing our child's teacher is so enthusiastic.'

Parent



## Curriculum Intent

Our aim is to provide our children with an engaging, exciting and empowering curriculum that equips them for today and tomorrow. At Leigh Academy High Halstow the curriculum is designed to recognise children's prior learning, provide first-hand, engaging learning experiences, allow the children to develop interpersonal skills, build resilience and become creative, critical thinkers.

Every child is recognised as a unique individual. We celebrate and welcome differences within our school community. The ability to learn is underpinned by the teaching of basic skills, knowledge, concepts and values with a vision to prepare them for life beyond primary school. We constantly provide enrichment opportunities to engage learning. We believe that childhood should be a happy, investigative and inquiring time in our lives, where there are no limits to curiosity and there is a thirst for new experiences and knowledge. The IB learner profile attributes are used to promote positive attitudes to learning which reflect the values and skills needed to promote responsibility for learning and future success. Community involvement is an integral part of our curriculum, inviting families and visitors to participate in learning and share experiences such as assemblies, Open Classroom and PTA events.

Our aim is that every child leaves Leigh Academy High Halstow with a sense of belonging to a tightly knit community where they have a growing confidence and skills to make decisions, self-evaluate, make connections and become lifelong learners.

The introduction of the IB PYP has ensured that the central idea and lines of inquiry followed by the children provide rich opportunities for deeper thinking, questioning and knowledge acquisition. By guiding the children to come up with the paths of learning they wish to follow, we are empowering them to make decisions, ask questions and feel confident to lead their learning.

The whole school follows the same transdisciplinary theme each module and learner profile attributes are explored further through assemblies. This is also underpinned by SMSC development and opportunities to celebrate British Values within assemblies. All subject areas, if possible, are taught through lines of inquiries and enable pupils to deepen their knowledge through thorough research and application. However, when necessary Maths and English skills are taught discretely.



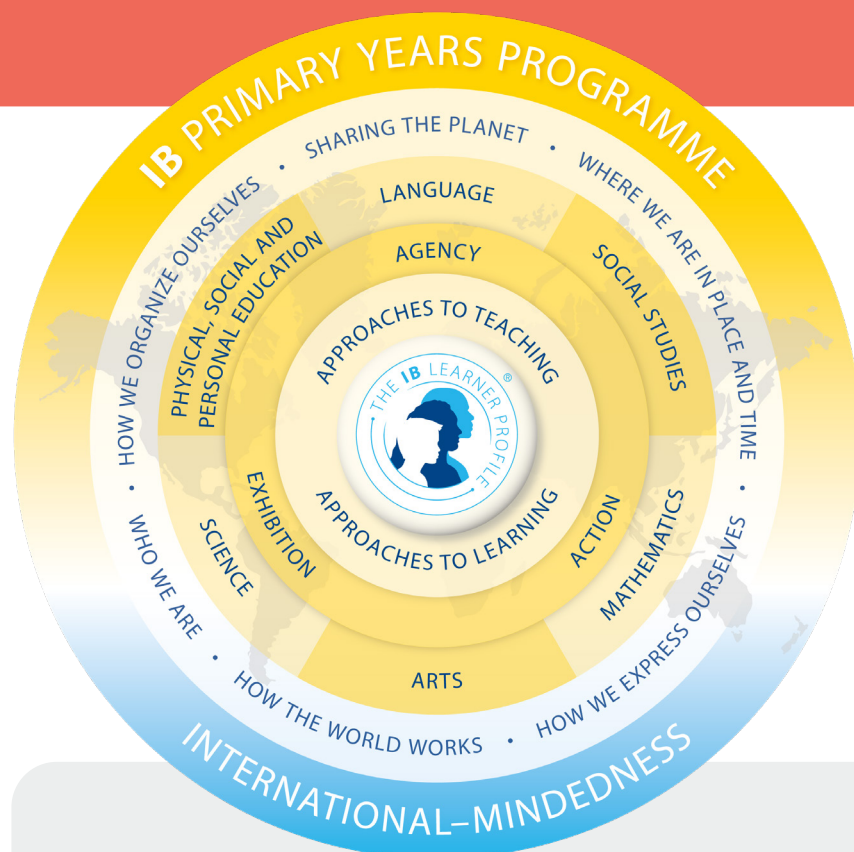
Dream  
Explore  
Succeed

# The International Baccalaureate Primary Years Programme



The Primary Years Programme (PYP) is designed for pupils aged 3 to 12 and is one of four programmes offered by the International Baccalaureate Organisation (IBO).

© International Baccalaureate Organisation  
2018



The PYP focuses on the development of the whole child as an inquirer, both in the classroom and in the world outside. It is a framework guided by six transdisciplinary themes of global significance, explored using knowledge and skills derived from six subject areas, as well as transdisciplinary skills, with a powerful emphasis on inquiry.

The PYP is flexible enough to accommodate the demands of the National Curriculum as this is the curriculum that Dartford Primary Academy will follow. The PYP:

- Allows integrated development of cognitive and affective skills;
- Enables us to develop a curriculum appropriate to meet pupils learning needs;
- Develops autonomous and critical learners;
- Content is chosen by academies but is delivered within a concept driven curriculum to bring coherence across subjects; and
- Assessment drives learning and teaching positively.

Leigh Academy High Halstow is a Candidate School\* for the Primary Years Programme. This school is pursuing authorization as an IB World School. These are schools that share a common philosophy—a commitment to high quality, challenging, international education that Leigh Academy High Halstow believes is important for our students.

*\*Only schools authorized by the IB Organization can offer any of its four academic programmes: the Primary Years Programme (PYP), the Middle Years Programme (MYP), the Diploma Programme, or the Career-related Programme (CP). Candidate status gives no guarantee that authorization will be granted. For further information about the IB and its programmes, visit [www.ibo.org](http://www.ibo.org)*





## Home learning

Reading is integral to the home learning experience. Pupils are asked to read regularly at home with a focus on developing reading skills whilst developing a love of reading.

Pupils also receive a termly home learning mat linked to the lines of inquiry and learner profile attributes. Pupils are asked to complete a number of activities from the options available. We recognise that our families have interests and commitments beyond the academy so the home learning can be completed over the term at times to suit each family.

There may be occasions when additional home learning is provided in the form of spelling investigations and maths challenges.

## Admissions

Pupils are admitted to Reception (Year R) in line with the local authority, Medway Council's, admission policy. The academy admission criteria is published on the website under the 'Information' tab.

Ours are held at Leigh Academy High Halstow for parents who are considering applying for a place at the academy.

Visits for pupils and parents who accept places will take place in the term before the children start school.

Dream  
Explore  
Succeed





## Pupils with Special Educational Needs (SEN)

Children who experience learning difficulties will receive additional support as appropriate. This may be in small groups or one to one sessions and may be academic support as well as social and emotional support. Class teachers discuss any concerns they may have about individual children with the Special Educational Needs Coordinator (SENCo) and parents are involved in discussions from the earliest possible time. The SENCo takes responsibility for gathering information and co-ordinating the child's special educational provision. Parents are kept informed at all stages of this procedure.

The academy works very closely with external support services and agencies such as the Educational Psychologist, Speech and Language therapists and the school nurse. Pupils also benefit from a Play Therapist working in school one day a week. As well as our school dog Baxter, a Dog Mentor visits school weekly to support specific pupils. The academy is fortunate enough to have a small sensory space to benefit our pupils as well.

'We know our son has additional needs and we are so grateful that the school gives us support and listens to any concerns or problems we have.'

Parent

# Parents and Community

Leigh Academy High Halstow has a very active Parent Teacher Association (PTA) which organises fundraising events to support the academy. Parents of all children attending the academy are automatically members of the Association and are invited to take an active interest or role in the work of the Association.

The programme of events is coordinated by the committee elected at the Annual General Meeting. Please let the school office know if you would like to become more actively involved with the PTA. Previous events have included: Summer Fair, Christmas Fair, Christmas Shop, Easter Raffle, Doughnut and cake sales, Christmas cards designs, Lady you Love Shop, Man of the Moment Shop, school discos plus much more!

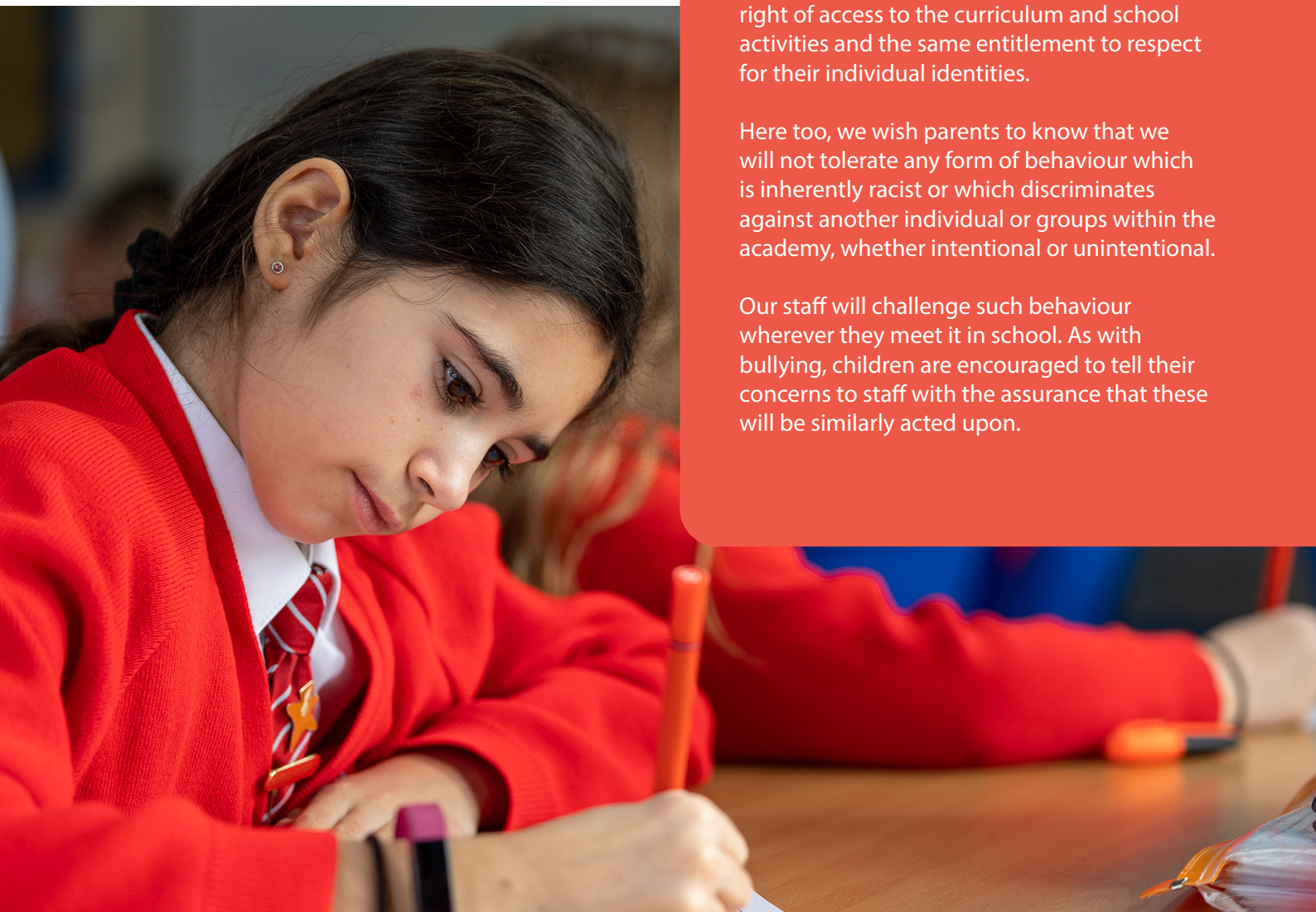
Dream  
Explore  
Succeed

## Including and valuing everyone

Our aim is to promote equality of opportunity as it is a basic human right. All pupils in our academy are equally valued and share the same right of access to the curriculum and school activities and the same entitlement to respect for their individual identities.

Here too, we wish parents to know that we will not tolerate any form of behaviour which is inherently racist or which discriminates against another individual or groups within the academy, whether intentional or unintentional.

Our staff will challenge such behaviour wherever they meet it in school. As with bullying, children are encouraged to tell their concerns to staff with the assurance that these will be similarly acted upon.





# Beyond the Classroom

## Visits/co-curriculum bids

Educational visits to places of interest to support the curriculum are planned by teaching staff at relevant times during the school year. Academy clubs vary but include Spanish Club, Irish Dancing, Choir, Gymnastics and Football. There is also an after school club on site led by outside providers until 5:15pm.

Pupils in Year 6 have the opportunity to take part in a residential visit.

Pupils take part in numerous sporting events and competitions throughout the year. These include swimming, hockey, football, cricket and athletics.

On occasions voluntary contributions may be sought from parents to help pay for certain activities. Full details will be given to parents in advance of the activity. Such activities would include trips to museums and exhibitions as well as visits from performing artists or groups where broader curriculum experiences are offered or curriculum work can be enhanced.

## Breakfast Club

The academy runs a Breakfast Club from 8am each day for pupils who have booked a place in advance. Pupils are offered a range of breakfast options including: cereal, toast, pastries, fruit, yogurts, smoothies and juices. Pupils engage in different activities each day ranging from sporting activities, arts and crafts and board games.

## School Meals

Cucina are our school meal providers and all meals are cooked in our kitchen on site every day. The menu rotates on a three weekly basis. Pupils in Year R-2 are entitled to a free meal as part of the government Universal Infant Free School Meal initiative. Parents of pupils in Year 3-6 can pay for school meals.

We encourage parents to provide a nutritious balanced packed lunch in a packed lunch bag or box that is labelled clearly.

Every child is provided with a school water bottle at the start of each year and it is expected that each child brings it in, cleaned and filled with water for the day ahead. Pupils can fill their bottles throughout the day.





# Safeguarding

Leigh Academy High Halstow is committed to ensuring the welfare and safety of all our children in school. We believe that our pupils have the right to learn in a supportive, caring and safe environment which includes the right to protection from all types of abuse; where staff are vigilant for signs of any children in distress and are confident about applying the processes to avert and alleviate any such problems.

We follow the Medway Local Authority safeguarding procedures. The academy's Child Protection Policy is available on the school website or can be requested via the school office.

Safeguarding is about ensuring that everyone is safe from harm and that we all feel safe in our environment.

## Digital Devices

iPads are available for every Year 1 and 2 child in the academy. Pupils in Year 3 to 6 have their own Chromebook to use in the academy to enhance the curriculum offer. Google Classroom is used regularly for in school learning and homework.



'My son goes to school happy and comes home happy, that tells me all I need to know!'

Parent



We hope you've enjoyed reading through our Primary prospectus and we can't wait to hear from you!

e: [info@highhalstow.latrust.org.uk](mailto:info@highhalstow.latrust.org.uk)



Dream  
Explore  
Succeed





Leigh Academy  
**High Halstow**

# Further INFORMATION

Please visit our academy website

[Leigh Academy High Halstow](#)

## Admissions information

Find out when our next open event is

[Visit our website](#)

## School Uniform

Please visit us to see more information

[Visit our website](#)





Leigh Academy  
**High Halstow**

Harrison Drive  
High Halstow  
Rochester  
Kent ME3 8TF

01634 251098  
info@highhalstow.latrust.org.uk  
leighacademyhighhalstow.org.uk

**Dream | Achieve | Excel**



**LEIGH**  
Academies Trust

Education for a better world

Chief Executive: Simon Beamish BA (Hons) MSc PGCE NPQH NLE FCCT

Carnation Road, Strood, Rochester, Kent ME2 2SX  
01634 412200 | fax: 01634 412201  
info@latrust.org.uk | leighacademiestrust.org.uk

Leigh Academies Trust is a registered company (company no 2336587) and an exempt charity.