

Central Idea

This statement ties the learning together to create connections and provide a context across pupils' knowledge.

Plants play a role in all living things.

Words in blue do not link to the central idea.

Lines of Inquiry

These inquiries are the phases of learning that take place, supporting the children to develop their understanding of the central idea.

1. How plants grow and survive (function)
2. Different ways living things use plants (connection)
3. Human impact on plants and growth (causation)

Maths

Place value within 50:

- understand numbers to 50, 1 more and 1 less, using a number line, compare and order numbers

Length and height:

- measure in objects and cm

Mass and volume:

- measure and compare mass, volume and capacity

PSPE

PSHE: money and work

- strengths and interests; jobs in the community

PE: invasion games

- finding and passing into a space
- develop throwing and catching skills.
- develop teamwork skills.

Computing

Pictograms:

- Collect data from others.
- Create a pictogram using J2Data.
- Choose appropriate icons for pictogram.

Science

Plants:

- Identify and name a variety of common, wild and garden plants, including deciduous and evergreen trees.
- Identify and describe the structure of flowering plants, including trees.

YEAR 1 MODULE 4

Social Studies

History: the growth of our village
Geography: human impact on the vegetation in an environment.
RE: what does it mean to belong to a faith community?

The Arts

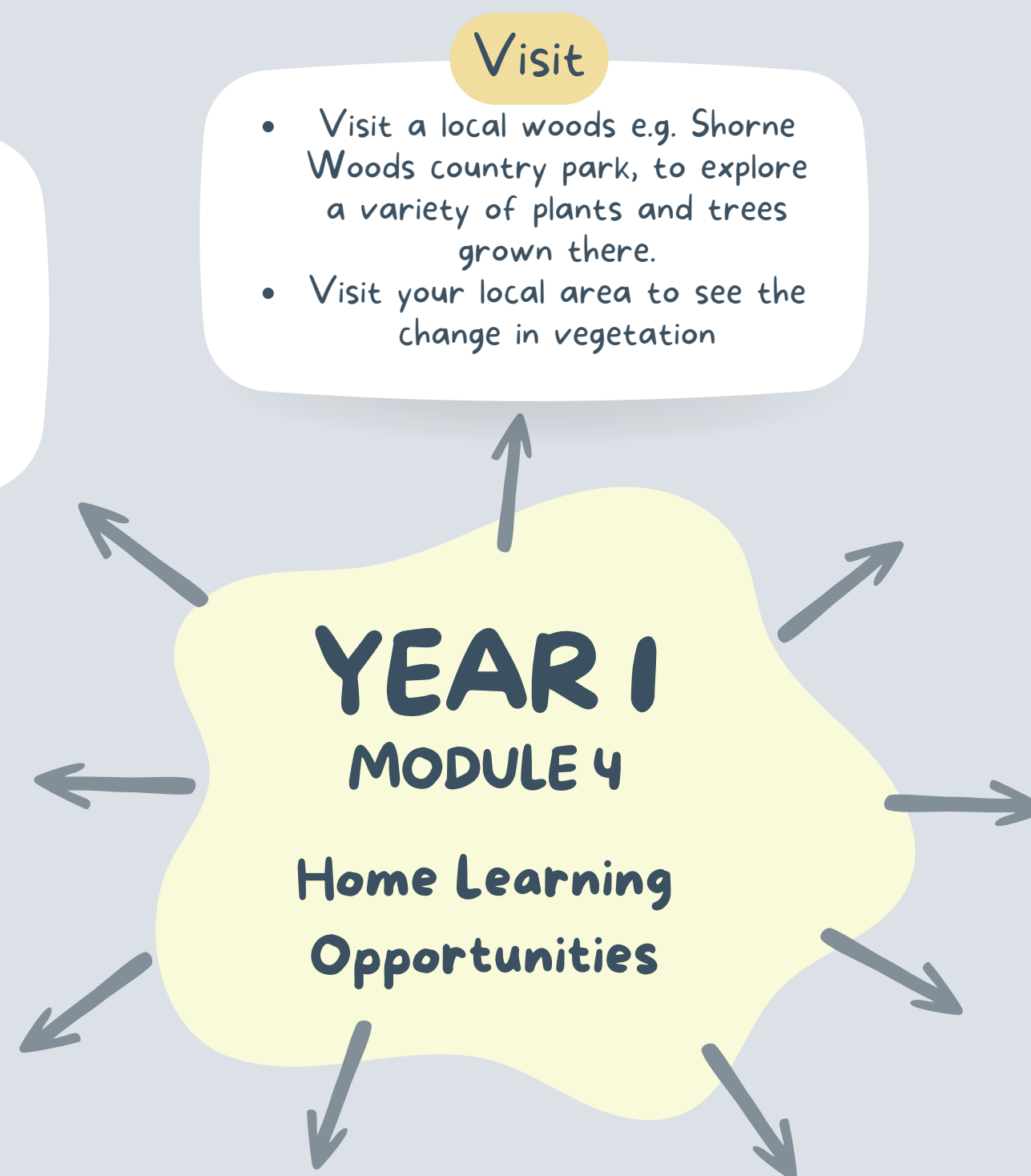
DT:

- use the basic principles of a healthy and varied diet to prepare dishes
- understand where food comes from

English

Text: 'Jack and the Beanstalk'

Writing Outcomes:
Narrative



Apps

Spelling Shed
NumBots
I-Minute Maths
Hit the Button Maths

Visit

- Visit a local woods e.g. Shorne Woods country park, to explore a variety of plants and trees grown there.
- Visit your local area to see the change in vegetation

Websites

- [BBC Bitesize: Plants](#)
- [Phonics Play](#)
- [J2data](#)
- [The Woodland Trust](#)

Get Creative

- Sketch the flowers as they start to bloom.
- Do bark and leaf rubbings using paper and wax crayons.
- Create a model of a tree using junk modelling.

In the Car

- Read a book.
- Practise number bonds to 5, 10 or 20.
- Practise spelling Year 1 common exception words.

Action

- Design a healthy snack for your friends and family.
- Grow and look after your own plant.

Look Out For

- different ways that plants can be used in everyday lives.
- stories about plants.
- recipes that involve plants.

IT

- Research the names of different plants and what they look like.
- Take photos of the plants you see.

Get Outdoors

- Go for a walk and collect data on how many different plants you can see.
- Walk around your local area to see how much it has grown over time. How many buildings are old or new?